

AARON B

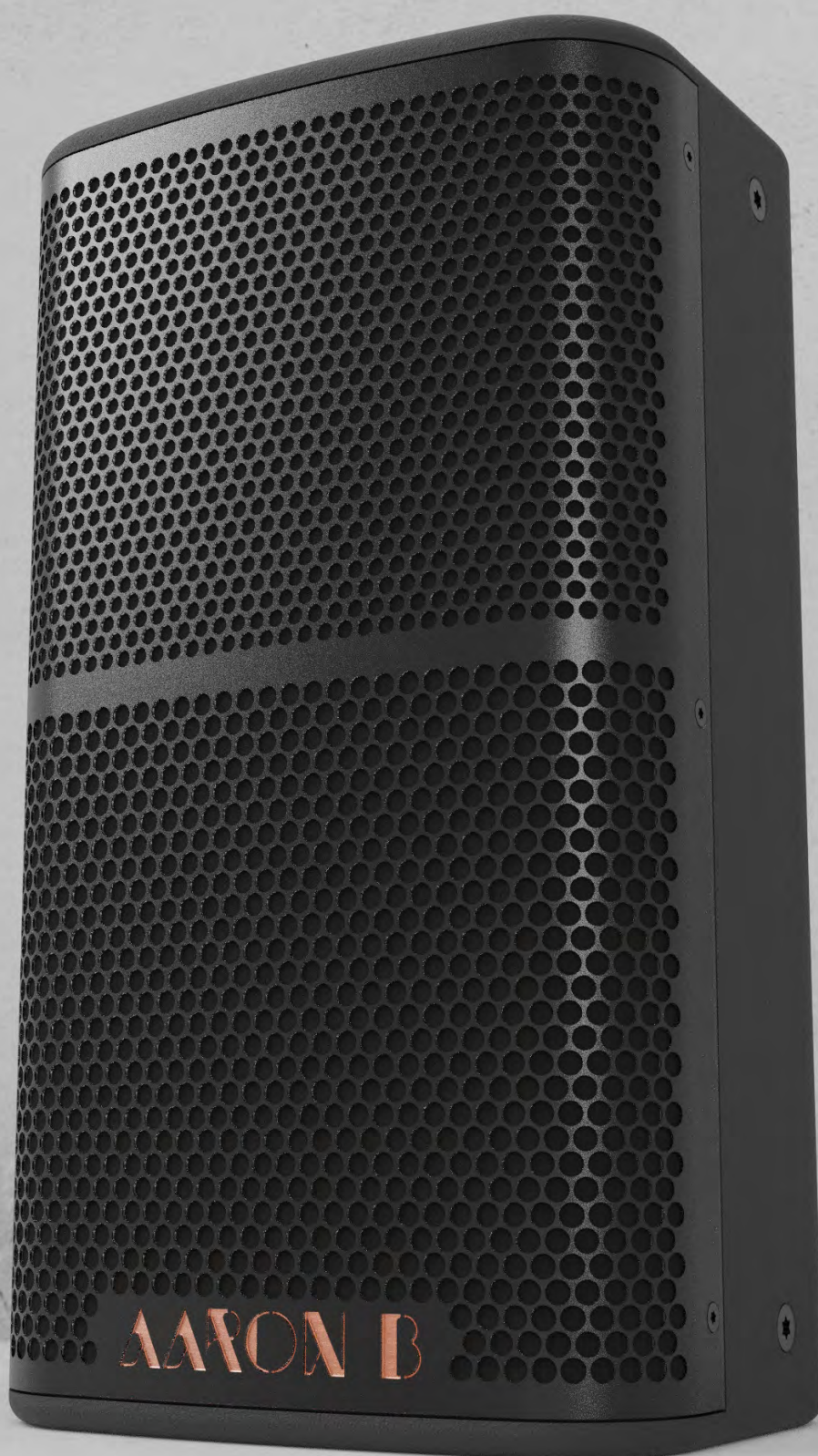
PRODUCT BROCHURE 2023

Portable

Installation

Corporate

Concert



AARON B

UNDERSTANDING SOUND IS LEARNING HOW TO LISTEN



Aaron takes his experience from his roots which run deep into the Jamaican culture of home-built competitive sound systems.

Started off as a DJ from young and came into the live music and professional industry, age 17, mixing for indie rock bands in small pubs and choirs at gospel concerts.

Aaron moved into the underground world of music to high level concerts and tours working with many international bands.

Over the 21 years in the business Aaron

became multi skilled working as a hire consultant for 2 large UK audio suppliers, a production manager for selective artists. System engineer using multiple audio brands, FOH & Monitors. He applied his hard-earned knowledge and experience to his speaker systems designs.

Combining experience, knowledge and top of the line component manufacturers and materials, the attention to detail enables Aaron B's products to stand out in the market.



CONTENTS

PURE SERIES P6	4
PURE SERIES P8	4
PURE SERIES P10	5
PURE SERIES P12	5
PURE SERIES P15	6
PURE SERIES P18S	6
PURE SERIES P10S	7
PURE SERIES P12S	7
PURE SERIES P15S	7
TASTE SERIES TS4	10
TASTE SERIES TS6	10
TASTE SERIES TS8	10
TASTE SERIES TS8-PS	11
TASTE SERIES TS12-PS	11
VISION SERIES VM8	13
VISION SERIES VM10-P	13
VISION SERIES VM12-P	14
VISION SERIES VMSUB-12	14
VISION SERIES VMSUB-15	15
VISION SERIES VMSUB-18	15
VISION SERIES VM10	16
VISION SERIES VM12	16
VISION SERIES VM15	17
STACKS	17
CORE SERIES 410 - 420 - 806	19
CORE SERIES ISC48	20
X-CORE SERIES	21
10 SERENE 1002A	22
APPLICATION: SYSTEM ENGINEER	23

PURE SERIES

The Pure Series is our easy to use, compact and versatile entry level product designed for consumers and professionals for multiple applications.

Key features

- Multi-angle function
- Multiple mounting options
- NL4 connectors
- Left and right versions
- Rotatable horns
- Multiple factory presets
- Flyable subwoofers
- Available in black or white

Applications

- Portable & installation sound
- Bar & Club systems
- Theatres
- Restaurants
- Houses of worship
- Corporate & AV systems
- Retail & leisure centres
- Vocal & acoustic stage monitor



PURE | P6



6” Two Way Passive Small Speaker

Currently the smallest of the Pure Series. It can be used as a vocal or choir monitor. Great for speech and background music. Can be pole or stand mounted. Features a conical 120° HF horn. Designed with multiple mounting points.

Type	Compact Mid/Hi Speaker System
Components	LF 1 x 6.5” (165mm) 2” voice coil HF 1 x 1” (25mm)/1.4” voice coil
Power rating	120W RMS, 240W Continuous
Impedance	16 ohms
Dispersion	120°
Frequency response	75Hz – 18kHz (Preset)

PURE | P8



8” Two Way Passive Compact Speaker

Designed for vocals and vocal monitors. Great for applications such as background and live music, gyms, bars, clubs and speeches and presentations at corporate events. Designed with multiple mounting points and features a top hat pole mount. It has a rotatable horn.

Type	Compact Mid/Hi Speaker System
Components	LF 1x8”(200mm)/2”voice coil, HF 1x1”(25mm)/1.7”voice coil
Power rating	150W RMS, 300W Continuous
Impedance	8 ohms
Dispersion	90 x 50°
Frequency response	68Hz – 18kHz (Preset)

PURE | P10



10” Two Way Passive Mid-Size Speaker

The P10 is a 10” two way mid-size speaker. Great for live music, gyms, bars, clubs and theatres. Designed with multiple mounting points and features a top hat pole mount, with a rotatable horn. This has an extended LF range and SPL level to the P8.

Type	Mid-size Full Range Speaker System
Components	LF 1x10”(250mm)/2.5”voice coil, HF 1x1”(25mm)/1.7”voice coil
Power rating	250W RMS, 500W Continuous
Impedance	8 ohms
Dispersion	90 x 50°
Frequency response	64Hz – 18kHz (Preset)

PURE | P12



12” Two Way Passive Full Range Speaker

Great for live music, mobile DJs, clubs and theatres. Designed with multiple mounting points and features a top hat pole mount, with a rotatable horn. This has an extended LF range and SPL level to the P10.

Type	Full Range Speaker System
Components	LF 1x12”(300mm)/3”voice coil, HF 1x1”(25mm)/1.7”voice coil
Power rating	300W RMS, 600W Continuous
Impedance	8 ohms
Dispersion	90 x 40°
Frequency response	56.6Hz – 18kHz (Preset)

PURE | P15



15” Passive Two Way Large Speaker

The P15 is the largest of the Pure Series full range speakers. It features a 15” woofer combined with a 1.4” compression driver. Great for live music, mobile DJs, large clubs. It has multiple mounting points and features a top hat pole mount. It also has a rotatable horn. This has an extended LF range and SPL level to the P12.

Type	Full Range Speaker System
Components	LF 1×15”(380mm)/3”voice coil, HF 1×1.4”(36mm)/3”voice coil
Power rating	400W RMS, 800W Continuous
Impedance	8 ohms
Dispersion	90 x 40°
Frequency response	50Hz – 16kHz (Preset)

PURE | P18S



18” Subwoofer

The P18S is currently the largest of the Pure Series Subwoofers. It features a 1x18” 600W woofer. It is designed to pair with the P12 and the P15 for extended bass requirements. Great for portable or installation applications. Wall or ceiling mount brackets available.

Type	Subwoofer Speaker System
Components	LF 1×18” (100mm)/4” voice coil
Power rating	600W RMS, 1200W Continuous
Impedance	8 ohms
Frequency response	32Hz – 125Hz (Preset)

PURE | P10S



Ultra Compact Subwoofer

The P10S is the smallest of the Pure Series subwoofers. It features a 1x 10” 300W woofer, designed to pair with the P6 and P8 for extended bass requirements. Small enough to be hidden away under seating. Wall or ceiling mount brackets available.

Type	Subwoofer Speaker System
Components	LF 1×10”(65mm)/2.56”voice coil
Power rating	300W RMS, 600W Continuous
Impedance	8 ohms
Frequency response	45Hz – 165Hz (Preset)

PURE | P12S



Small Subwoofer

Featuring a 1 x 12” 300W woofer designed to pair with the P8 and P10 for extended bass requirements. Designed to be hidden away on install applications. Wall or ceiling mount brackets available.

Type	Subwoofer Speaker System
Components	LF 1×12”(75mm)/3”voice coil
Power rating	300W RMS 600W Continuous
Impedance	8 ohms
Frequency response	40Hz – 150Hz (Preset)



Pole mounted speakers

PURE | P15S



Mid Size Subwoofer

It features a 1 x 15” 500W woofer. It is designed to pair with the P10 and P12 for extended bass requirements. Great for portable or installation applications. Wall or ceiling mount brackets available.

Type	Subwoofer Speaker System
Components	LF 1×15”(100mm)/4”voice coil
Power rating	500W RMS, 1000W Continuous
Impedance	8 ohms
Frequency response	35Hz – 140Hz (Preset)

TASTE SERIES

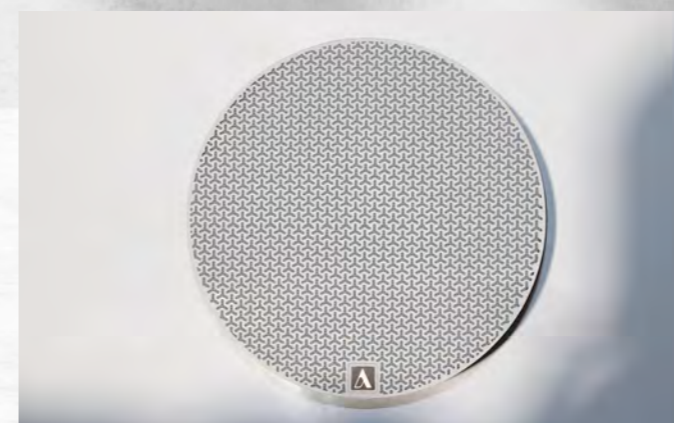
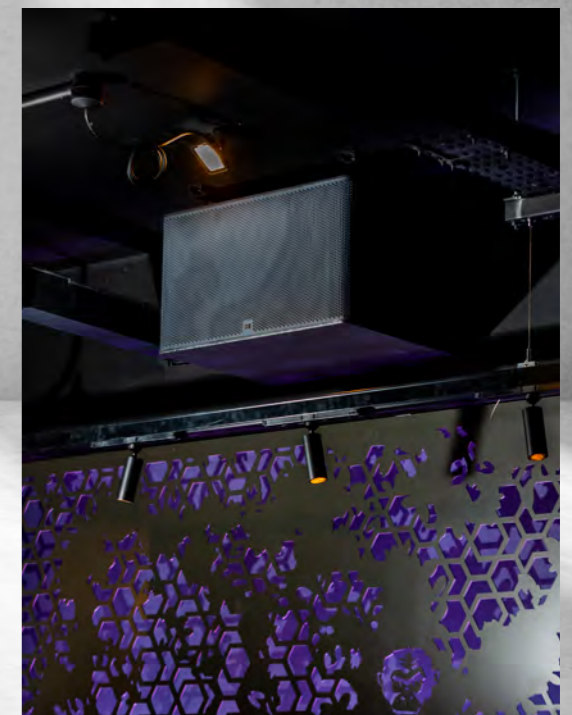
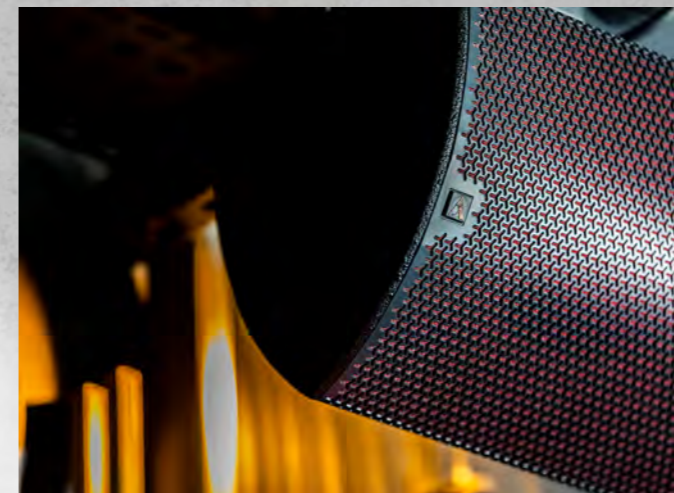
The Taste Series is our luxury prestige range. This series of speakers not only sound exceptional but look aesthetically pleasing too. Their boutique appearance can be tailored to coordinate with the architectural design of their environment.

Key features

- Luxury grills
- Multiple colour options
- High efficiency
- Low profile birch plywood enclosure
- Optional polyurethane textured paint
- Phoenix connectors
- Flyable
- Subwoofers

Application

- Bars
- Restaurants
- Retail shops
- Museums
- Theatres
- Houses of worship
- Music venues
- Home audio



TASTE | TS4



Luxury 4” Coaxial 125w Speaker
Currently the smallest model in the Taste series, which features a 4” coaxial driver. Great for background music, hotels, museums, restaurants, retail and more.

Type	2 way Coaxial Passive Speaker
Components	Coaxial LF 1 x 4”, 1.34” voice coil, HF 1 x 1.4”, 1.42” voice coil
LF Power rating	100W AES, 200 AES Peak
Impedance	12 ohms
Dispersion	70° Conical
Frequency response	120Hz – 18kHz (Preset)

TASTE | TS6



Luxury 6.5” Coaxial Installation Speaker
Slightly larger than the TS4, The TS6 features a 6.5” coaxial driver. Great for bars, background music, hotels, gyms, museums, restaurants, retail and more.

Type	2 way Coaxial Passive Speaker
Components	Coaxial LF 1 x 6”, 2” voice coil, HF 1 x 1”, 1” voice coil
LF Power rating	150W AES, 300 AES Peak
Impedance	8 ohms
Dispersion	90° Conical
Frequency response	80Hz – 18kHz (Preset)

TASTE | TS8-PS



Luxury Dual 8” Installation Bass Speaker
The TS8-PS is a dual 8” very low profile bass speaker designed to pair with the TS4 and TS6 for extended bass requirements.

Type	Bass Speaker
Components	2 x LF 1 x 8” woofer, 2” voice coil
LF Power rating	250W AES, 500 AES Peak
Impedance	8 ohms
Frequency response	55Hz – 135Hz (Preset)

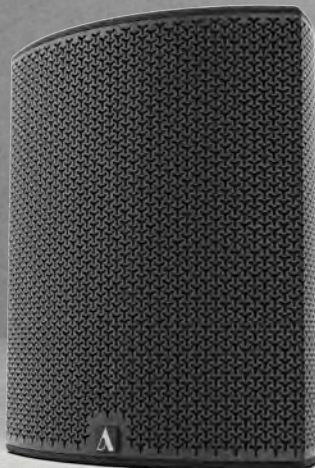
TASTE | TS12-PS



Luxury 12” Installation Bass Speaker
The TS12-PS is a high powered compact 12” bass speaker designed to pair with the TS6 and TS8 for extended bass requirements.

Type	Bass Speaker
Components	1 x LF 1 x 12” woofer, 4” voice coil
LF Power rating	1000W AES, 2000 AES Peak
Impedance	8 ohms
Frequency response	40Hz – 110Hz (Preset)

TASTE | TS8



Luxury 8” Coaxial Installation Speaker
The largest of the Taste series featuring an 8” coaxial driver. Great for bars, clubs, background music, gyms, restaurants, theatres and more.

Type	2 way Coaxial Passive Speaker
Components	Coaxial LF 1 x 8”, 2.56” voice coil, HF 1 x 1.4”, 1.46” voice coil
LF Power rating	250W AES, 500 AES Peak
Impedance	8 ohms
Dispersion	90° Conical
Frequency response	70Hz – 18kHz (Preset)

Acoustic fabric colour choices and bespoke options to contrast or tone with the grille.



VISION SERIES

Our benchmark professional audio speaker system for high demand applications such as touring, festivals and nightclubs. This series includes speakers for multiple functions from point source and subwoofers to stage monitor. Vision's high power, dynamic response and exceptional clarity gives engineers all that they need to satisfy listeners.

Key features

Low profile birch plywood enclosure
High SPL
CMF Conical Mid flare
Polyurethane textured paint
NLT4 touring quality connectors
Mirrored operation
Bi-amped for maximum performance
Passive switch operation
Anti-slip rubber base

Applications

Concerts
DJ monitors
Corporate
Theatres
TV studios
Houses of Worship
Rehearsal studios
Live Music Venues

VISION | VM8



VISION | VM10-P



Multiple mounting points and accessories available.

Two Way Multi Function Speaker

Featuring an 8" woofer and a 1" compression driver. This speaker can be operated in bi-amp or passive mode at the flick of a switch. This product is point source speaker or a stage monitor speaker for applications such as live music, corporate events, bars and clubs.

Type	2 Way bi-amp Point source/ Stage Monitor
Components	LF 1×8" 2" voice coil, HF 1×1" 1.73" voice coil
LF Power rating	200W AES, 400 AES Peak
LF Impedance	8 ohms
HF Power rating	100W AES, 200 AES Peak
HF Impedance	16 ohms
Dispersion	90° x 70
Frequency Response	65Hz – 18kHz (Preset

Full Range Two Way Bi-amp Speaker

Featuring a 10" woofer and a 1.4" compression driver. This product is a point source speaker for applications such as live music, corporate events, bars and clubs. Can also be used as a stage sidefill system paired with the VM10 monitor.

Type	2 Way bi-amp Stage Monitor
Components	LF 1×10" 3" voice coil, HF 1×1.4" 2.91" voice coil
LF Power rating	500W AES, 1000 AES Peak
LF Impedance	8 ohms
HF Power rating	100W AES, 200 AES Peak
HF Impedance	16 ohms
Dispersion	90° x 70
Frequency Response	56Hz – 18kHz (Preset)

VISION | VM12-P



Full Range Two Way Bi-amp Speaker

Featuring a 12” woofer and a 1.4” compression driver. This product is a point source speaker for applications such as live music, corporate events, bars and clubs. Can also be used as a stage sidefill system paired with the VM12 monitor.

Type	2 Way bi-amp Stage Monitor
Components	LF 1×12” 3.5” voice coil, HF 1×1.4” 2.91” voice coil
LF Power rating	700W AES, 1400 AES Peak
LF Impedance	8 ohms
HF Power rating	100W AES, 200 AES Peak
HF Impedance	16 ohms
Dispersion	60° x 40°
Frequency response	54Hz – 18kHz (Preset)

VISION | VMSUB-12



Dual 12” Subwoofer

It is the smallest of the Vision Series subwoofers. It is designed to pair with all Vision point source speakers and monitors as a drum sub, DJ sub, sidefill or FOH system. Perfect for touring and installation applications.

Type	Subwoofer Speaker System
Components	2 × 12” Woofers 4” voice coil
Power rating	1400W AES, 2800 AES Peak
Impedance	4 ohms
Frequency Response	40Hz – 90Hz (Preset 1) 40Hz – 120Hz (Preset 2)

VISION | VMSUB-15



Dual 15” Subwoofer

The VMSUB-15 is a dual 15” subwoofer. It is designed to pair with all Vision point source speakers and monitors as a drum sub, DJ sub, sidefill or FOH system. This has an extended LF range and SPL level to the VMSUB-12. Perfect for touring and installation applications.

Type	Subwoofer Speaker System
Components	2 × 15” Woofers 4” voice coil
Power rating	1400W AES, 2800 AES Peak
Impedance	4 ohms
Frequency response	35Hz – 90Hz (Preset 1) 35Hz – 115Hz (Preset 2)

VISION | VMSUB-18



Single 18” Subwoofer

It is designed to pair with all Vision point source speakers and monitors as a drum sub, DJ sub, sidefill or FOH system. This has an extended LF range and SPL level to the VMSUB-12. Perfect for touring and installation applications.

Type	Subwoofer Speaker System
Components	1 × 18” Woofers 4” voice coil
Power rating	1400W AES, 2800 AES Peak
Impedance	4 ohms
Frequency Response	28Hz – 80Hz (Preset 1) 28Hz – 115Hz (Preset 2)

VISION | VM10



Dedicated Bi-amp Stage Monitor
Designed the same as its point source sibling, the VM10-P. Featuring a 10" woofer and a 1.4" compression driver. This product is designed for corporate, live music, concerts and rehearsal studios. With high feedback resistance dynamic sound and sweet clarity. This product will stand up to any challenge. available.

Type	2 Way bi-amp Stage Monitor
Components	LF 1×10" 3" voice coil, HF 1×1.4" 2.91" voice coil
LF Power rating	500W AES, 1000 AES Peak
LF Impedance	8 ohms
HF Power rating	100W AES, 200 AES Peak
HF Impedance	16 ohms
Dispersion	90° x 70°
Frequency Response	56Hz – 18kHz (Preset)

VISION | VM12



Dedicated Bi-amp Stage Monitor
The VM12 is a dedicated bi-amp stage monitor designed the same as its point source sibling, the VM12-P. Featuring a 12" woofer and a 1.4" compression driver. This product is designed for corporate, live music, concerts and rehearsal studios. With high feedback resistance dynamic sound and sweet clarity. This product will stand up to any challenge.

Type	2 Way bi-amp Stage Monitor
Components	LF 1×12" 3.5" voice coil, HF 1×1.4" 2.91" voice coil
LF Power rating	700W AES, 1400 AES Peak
LF Impedance	8 ohms
HF Power rating	100W AES, 200 AES Peak
HF Impedance	16 ohms
Dispersion	60° x 40°
Frequency response	54Hz – 18kHz (Preset)

VISION | VM15



Large Vision Bi-amp Stage Monitors
The VM15 is the largest of the Vision bi-amp stage monitors. Designed for the highest demanding concerts and festivals featuring a 15" woofer and a 1.4" compression driver, which delivers. With a heavy punch, high feedback resistance dynamic sound and sweet clarity. This product will stand up to any challenge.

Type	2 Way bi-amp Stage Monitor
Components	LF 1×15" 3.5" voice coil, HF 1×1.4" 2.91" voice coil
LF Power rating	700W AES, 1400 AES Peak
LF Impedance	8 ohms
HF Power rating	100W AES, 200 AES Peak
HF Impedance	16 ohms
Dispersion	60° x 40°
Frequency response	48Hz – 18kHz (Preset)

STACKS | VARIATIONS



CORE SERIES

Optimised for high end pro audio applications and available in four-channel & eight channel versions. Supplied loaded with Aaron B speaker product presets, enabling you to simply recall a model and then plug and play. This gives users consistency, full clarity & dynamic performance.

Applications

- Concerts/Touring
- DJ Events
- Festivals
- Corporate
- Night clubs/bars
- Houses of Worship
- Theatres
- Commercial installations

Key features

- 4 and 8 Channel Amplifiers
- 96kHz digital signal processing
- Pure Class D amplification
- 85V to 240V Auto-sensing PSU
- Analogue, AES3 and optional Dante inputs
- Full front panel user interface
- Over-designed switch mode power supply
- Manufactured in the UK

They offer a unique advanced amplifier technology, tremendous power, and lucid integrated DSP audio performance.

Uniquely, each channel configures to deliver its maximum power into 2, 4, or 8 Ohms (410/806 model) and between 2 or 4 Ohms (420 model).



CORE | 410, 420, 806



Core 410 | Core 420 | Core 806 Amplifiers

Ethernet network for remote control and monitoring. Optimised front panel for full local control of vital features. Flexible management of presets. Powerful VX limiter suite with Peak, RMS, and Excursion limiting. Multiband limiting for passive 2-way enclosures.

The amplifiers can be controlled from the front panels or for full visibility & function they can be controlled by our System Engineer program. See page 23

Power specification per channel	Core 420	Core 410	Core 806
Crest Factor of 4 (12dB), 2-Ohm nominal load	5,000W	2,500W	750W
Crest Factor of 2.8 (9dB), 4-Ohm nominal load	3,000W	2,500W	750W
Crest Factor of 2 (6dB), 8- Ohm nominal load	1,500W	1,500W	750W
Bridged, per channel pair, 4 Ohm load	10,000W	5,000W	1,500W

CORE | ISC48



Intelligent System Controller

A high performance and easy to use speaker management processor. You get processing for 4 inputs and 8 outputs with the latest analogue to digital conversion and DSP technologies. The advanced 96kHz DSP provides unique and genuinely useful features with unique aspects of the DSP algorithms that are not available on products from any other manufacturer.

The unit comes with analogue and AES3 inputs and outputs as standard. You have the option to add a Dante™ card for Dante inputs and outputs.

Key features

- 96kHz digital signal processing
- 4 input & 8 output channels
- Analogue, AES3 & optional Dante feeds
- Full front panel user interface
- Manufactured in the UK

The amplifiers can be controlled from the front panels or for full visibility & function they can be controlled by our System Engineer program. See page 23

Core Series Benefits

The Core Series models develop 750 to 5,000 Watts per channel and for a bridged pair expect 1500 to 10,000 Watts. These power levels deliver on all channels simultaneously and are not, 'transient, burst' or peak power figures. This power level applies when the same dense program material drives all the channels.

Plus, you can select the nominal loads as 25V, 70V & 100V constant Voltage (CV) lines, giving designers, and integrators exceptional flexibility.

CORE | X5



The X-Core X5, a 4 Channel DSP Amplifier

The X-Core series X5 offers a unique amplifier range with advanced technology, plenty of power, and an advanced fully-integrated 96kHz DSP providing unique and tremendously useful features. This amplifier is suitable for installations in venues such as bars, restaurants, Houses of Worships, leisure centres, theatres, or even retail premises. The versatile X5 can deploy as a portable amplifier if you preprogram it or pack a laptop in with your kit.

The X5 amplifier is compatible with any speaker, not just the Aaron B range giving you the flexibility to use manual DSP control with any other brand.

Key features

- 96kHz digital signal processing
- Pure Class D amplification
- 85V to 240V Auto-sensing PSU
- Tamper proof front panel
- Manufactured in the UK

The amplifiers can be controlled from the front panels or for full visibility & function they can be controlled by our System Engineer program. See page 23

Power specification per channel	X5
Crest Factor of 4 (12dB), 2-Ohm nominal load	1,250W
Crest Factor of 2.8 (9dB), 4-Ohm nominal load	800W
Crest Factor of 2 (6dB), 8-Ohm nominal load	450W
Bridged, per channel pair, 4 Ohm load	2,500W
25V line (CV) operation, Crest Factor 4 (12dB)	625W
70V line (CV) operation, Crest Factor 4 (12dB)	1,250W
100V line (CV) operation, Crest Factor 4 (12dB)	1,250W

SERENE | 1002A



APPLICATION | SYSTEM ENGINEER

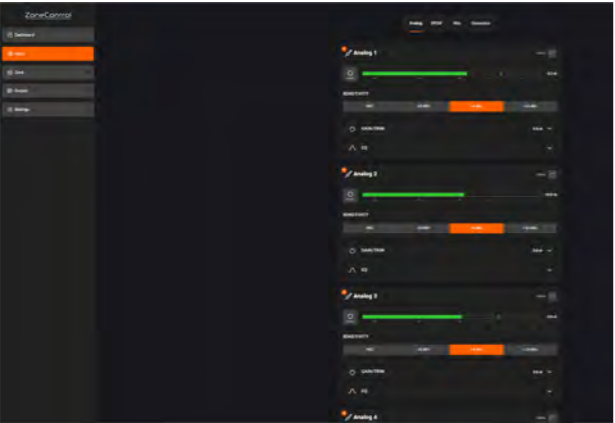


Application

- Restaurant
- Corporate venues
- Night clubs/bars
- Houses of Worship
- Theatres
- Commercial installations
- Home audio systems

Key features

- 4 Input channels Channels
- Matrix mixer
- Web application
- Network amplifier
- 96kHz digital signal processing
- Pure Class D amplification
- 100 V – 240 V
- Analogue, digital and optional Dante inputs



Channels	2 x Lo-Z / 1 x Hi-Z
Output power @ 2Ω	2 x 500 W 1 x 1000 W
Output power @ 8Ω	2 x 250 W 1 x 1000 W
Output power @ 70V	1 x 1000 W
Output power @ 100V	1 x 1000 W
Total System Power	1000 W
Power Consumption	350 W

System Engineer Application

An advanced amplifier control and monitoring software. It works with all of our Core & X-Core amplifier & processors. System Engineer and connected device(s) are intimately intertwined, faithfully duplicating any control adjustments in System Engineer or on the front panel of the device. Adjust gain control on the device and watch the gain value in System Engineer smoothly slide in sympathy.

You get powerful grouping with overlays for EQ, Gain and Delay. When you've got your EQ curve sorted you can copy and paste between channels and devices. You can also mute the whole system.

Convenient time saving features

- Flexible management of presets, and Overlay grouping of Mutes, Gains, Delays, and EQ across the entire system.
- Ethernet network for remote control and monitoring.
- Flexible management of presets
- Powerful VX limiter suite with Peak, RMS, and Excursion limiting. Multiband limiting for passive 2-way enclosures
- Users can create and save custom presets for other branded audio systems



Production Process | Warehousing



AARON B

E: info@aaronbaudio.co.uk

T: 0161 746 4183

Unit 5 Quest Park, Moss Hall Road, Heywood, Bury, BL9 7JZ

W: www.aaronbaudio.co.uk

AARON B IS A BRAND & TRADEMARK OF K&A AUDIO SYSTEMS UK LTD